

Installation Instructions For:

plus+liner FRP Panels

plus+liner panels should only be installed over solid wall surfaces (wood, plasterboard, etc.). Wall surfaces should be clean, flat, dry and smooth. Unsmooth wall surfaces should be made flat for best results. Liner panels will form to the contour of the wall surface when attached. Clips or caulking are recommended to hold ceiling panels in place.

Inspection, Storage and Preparation:

plus+liner panels should be stored in a dry area. It is not recommended to store panels outdoors. Panels should be unwrapped and removed from skid and stacked on a flat, dry surface. Normal fire-safety precautions should be taken when storing and using panels.

Tools:

Panels can be cut using power saws with carbide tip blades. Liner panels may also be cut with masonry blade. Panels may be drilled for fastening with a metal drill bit. A masonry bit should be used when drilling in concrete, if required. If drill bit becomes worn during installation, replace with a new one.

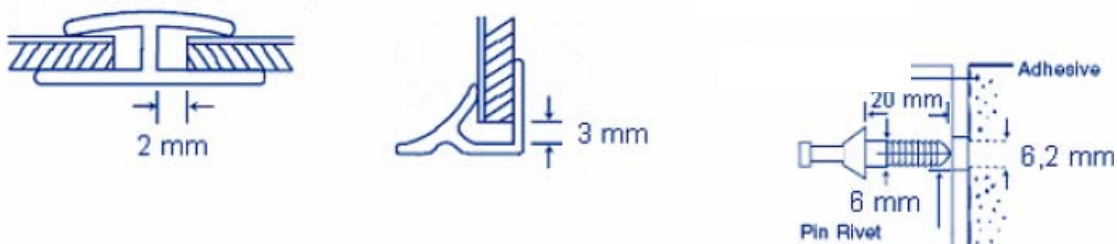
*Caution: Protect eyes with goggles and cover mouth with a filter mask when cutting **plus+liner** panels.*

Expansion & Contraction:

plus+liner panels will expand and contract due to changes in temperature. Allow a 3 mm gap at ceiling and base. Allow 1,6 mm gap between panels and division bars. If face mounted moldings (T-Bar, Batten, two piece division bar, etc.) are used, allow a 2 mm gap between panels. See diagrams below.

Allow more space for expansion and contraction of panels longer than 245 cm and in areas with high fluctuations in temperature. Pre-drilled holes for **plus+liner** panels should be slightly larger than the diameter of fastener shank to allow for normal expansion and contraction. See diagram.

NOTE: Allow for expansion of panels when installing around pipes, conduits, electrical outlets, etc.



Moldings & Sealants:

Use of PVC moldings and silicone sealant with panels is recommended to achieve a moisture resistant installation. PVC moldings also give the installation a “finished” appearance. Cut moldings to size and place silicone sealant into channel of moldings during installation. Place moldings on panels before fastening, if required.

In high moisture and frequent washdown areas, silicone should be placed between moldings and floor to prevent moisture from penetrating the back of the panel substrates. On cement floors, use a self-priming sealant.

If no moldings are used, silicone sealant should be placed in gaps at floor, ceiling and between panels for moisture resistant installation. Remove excess silicone during installation or trim off after silicone has cured.

CAUTION: Failure to use moldings and sealant may cause panel deterioration. In high moisture areas or in standing water, edge swelling and moisture absorption by substrate will occur if appropriate moldings and sealant are not used.

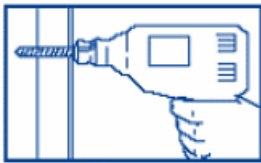
Fasteners

plus-liner panels should be installed with non-corroding fasteners. Plastic pin rivets, chrome pin rivets, one piece nylon rivets, stainless nails or screws are recommended. See below. Fasteners should be installed to fit snug but should not be over tightened. Always select proper size fasteners for installation. PVC pin rivet fastens panels to wood, metal, drywall, concrete, insulation material, etc. See diagrams below.

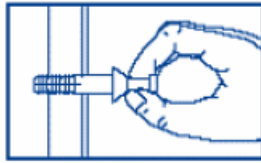
Chrome pin rivet has high shear strength but should be used in low moisture area. Installation is the same as plastic pin rivet above.

One piece nylon rivet fastens panel to any wood substrate or wood stud. See diagrams below.

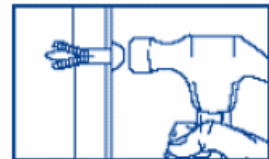
Stainless nails or screws can be used to install panels.



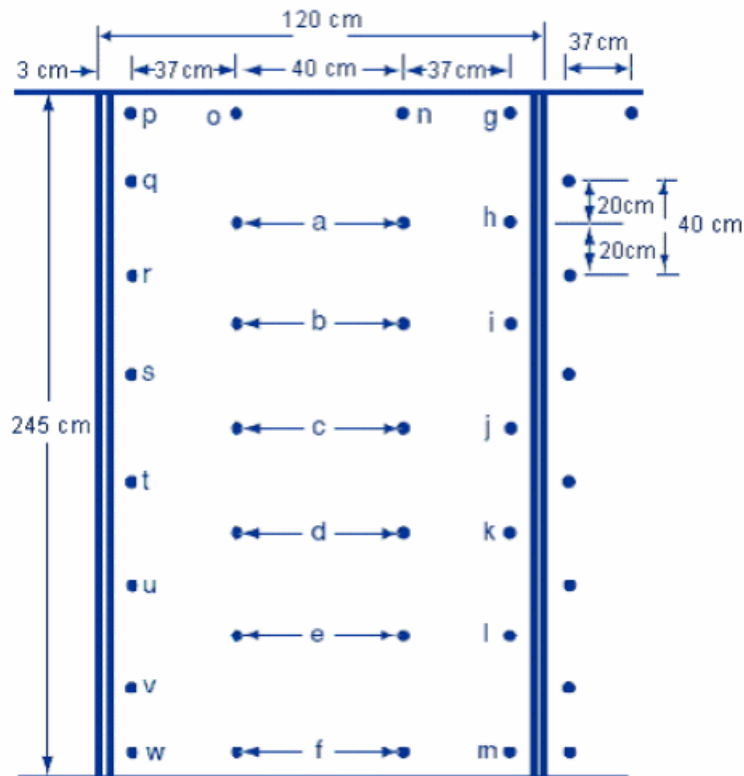
Drill a hole



Clean the hole and insert the rivet



Drive rivet flush



Adhesives:

The use of general purpose construction adhesive when installing panels is recommended, along with fasteners. Whenever adhesive is used, follow manufacturer's instructions carefully. Many adhesives are flammable and some may not be compatible with paneling.

plus-liner panels may be successfully installed over plaster board (drywall or gypsum) using only adhesive. However, it is recommended to use fasteners along with adhesive for best results. Adhesive failure is not panel failure. Adhesive should be applied to the entire back side of the panel about 1/4" (6.4 mm) thick, using a notched trowel. Follow adhesive manufacturer's recommendations for detailed installation guidelines. Typical application is shown below.

After applying adhesive, tap surfaces of panel with a rubber mallet or block of wood to aid bonding of adhesive to wall and panel.



Trowel Application



Adhesive



Trowel

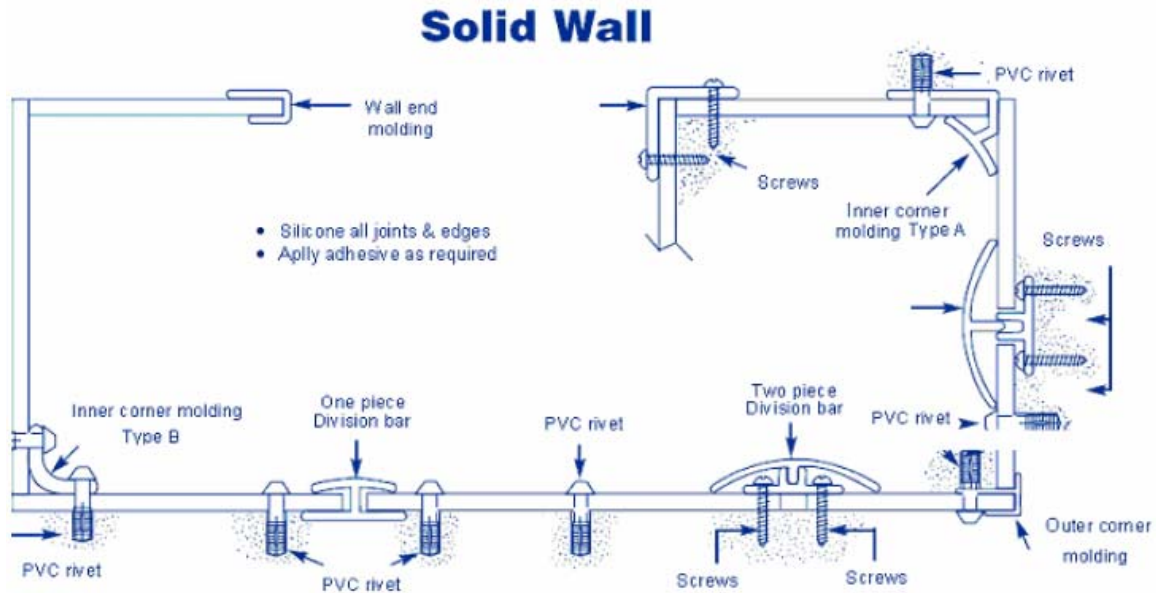
Trowel Application Adhesive Trowel Fastening/Fastener Layout

- First panel installed should be set true with a plumb line.
- Check plumb line during installation.
- Do not fasten edges of panels until moldings are in place. (Except when using face mounted moldings).
- **plus-liner** panel / fastener layout / solid wall:
 1. Fasten panel at center and work outward.
 2. Fasteners based upon 40 cm on center.
 3. Fasteners should be staggered on opposite panel edges and next to division bar for flat seam. See diagram at right.
 4. Liner panels should be pre-drilled for fastener installation using a guide panel.

Molding Installations:

The diagram below shows the various moldings that can be used with the *plus+liner* panels.

- A. Vinyl or aluminum moldings can be used in the above diagram.
- B. Vinyl moldings should not be used for exterior applications.
- C. Cut moldings as needed for proper fit. The divider and the moldings may need to be cut to accommodate ceiling and base moldings.
- D. Place moldings on panels before fastening edges, if required.
- E. Always use moldings in high moisture areas.



Installation Reminders:

1. Follow safety and fire guidelines during installation and use of panels. Compliance with local building codes is recommended.
2. First panel installed should be set true with plumb line. Check plumb line during installation.
3. Precondition panels prior to installation and allow for expansion and contraction during installation.
4. Use moldings, silicone, fasteners and adhesive with panels for best installation.
5. Remove excess silicone during installation or trim after silicone has cured.
6. Place moldings on panels, if required, before fastening panels.
7. Cut moldings as needed. For example: division bar may need to be cut to accommodate a ceiling or base cove.
8. Cut panels, if required, for proper installation.
9. Use hold-down clips if panels are used in a suspended ceiling.
10. Clean panels, if required, after installation.

Cleaning Instructions

plus+liner Panels are designed for minimum care and maintenance. When cleaning panels, wash with a light liquid detergent.

It is strongly recommended not to use abrasive cleaners on panels

Following these instructions, *plus+liner* Panels will give a fine and lasting appearance for many years.

Contact your *plus+liner* distributor for more information.